

# CAMPOS POÉTICOS

SILVIA BÄCHLI

SEPTEMBER 14th - NOVEMBER 11th

*Campos poéticos (Poetic Fields)*, consists of more than 20 works of gouache on paper, from different formats and periods, including recent pieces shown for the first time.

The exhibition display, designed by the artist, borrows strategies from installation as an artistic genre, being these a key component in Bächli's work through which she emphasizes the importance of the viewers' physical experience within the space: direct, multidimensional, present and poetic.

Silvia Bächli makes subtle and non-invasive two-dimensional interventions, creating the conditions for encounters with the artworks that go beyond their material limits and transform into an environment. Her work is (also) a representation of bodily echoes where she uses the line and the flatness as a synthesis of the basic expressive. In the relationship between the drawings and the architecture, the visual voids are highlighted, yet loaded with information: spaces that contain the memory of the artist's movements during the creative process, latent in the invisible continuity of the harmonic dimensions and the rhythm of the strokes.

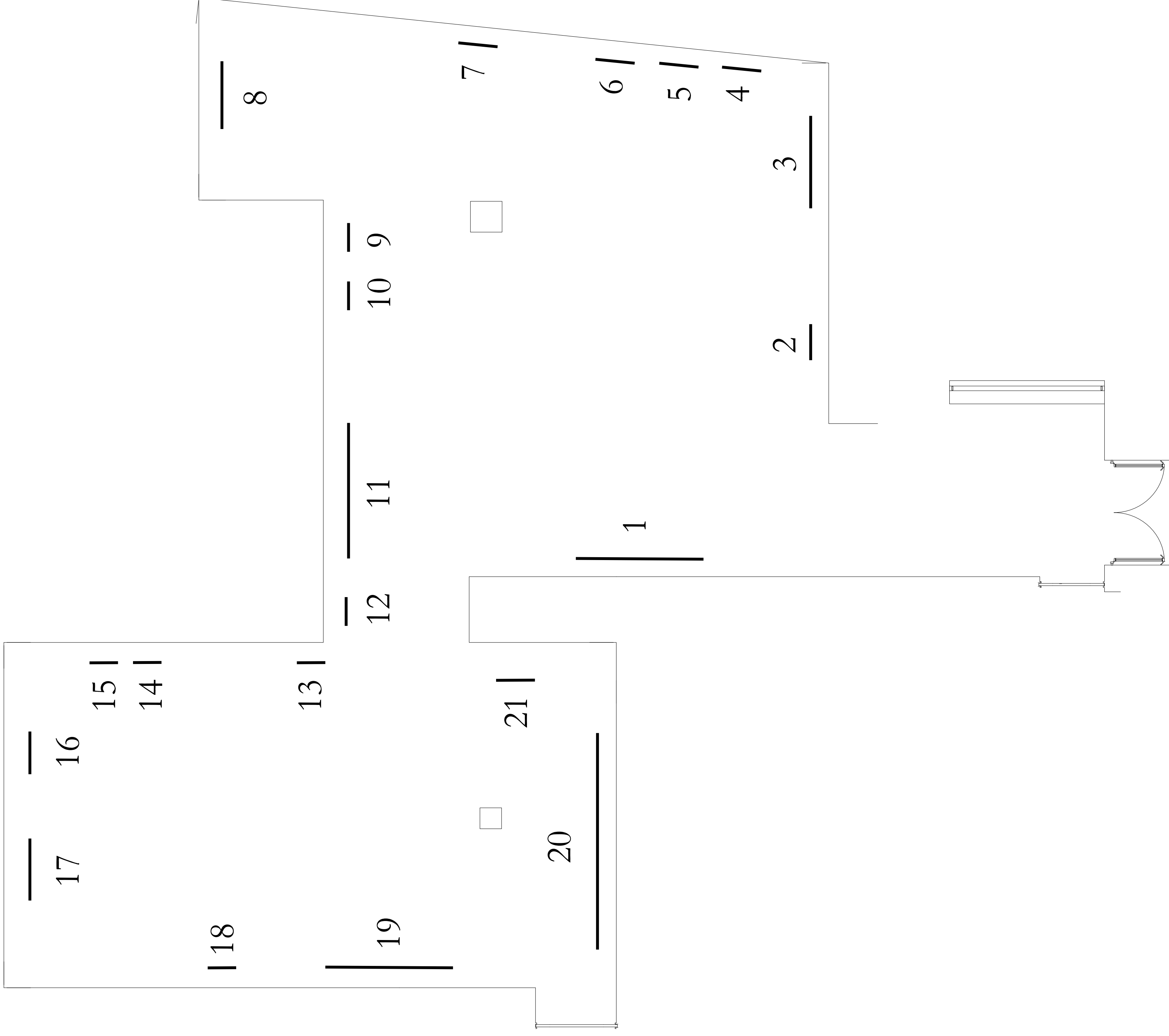
The title of the exhibition underlines the links and intersections between movement, body and architecture, based on the premise that the (empty) spaces delimit forms that define paths and rhythms, giving rise to fields of meaning, fluctuating and poetic.

*Silvia Bächli (1956) lives and works in Basel and has a long history of international exhibitions, having received prestigious awards and recognitions. Her work is in collections of institutions such as: Centre Georges Pompidou (Paris), Dallas Museum of Art, (Texas, USA), Kunstmuseum Basel, and MoMA (New York), to mention a few. In 2009 she represented Switzerland at the Venice Biennale. In 2024 she will have solo exhibitions at the Centro Botín (Santander, Spain) and at the Kunst Museum Winterthur (Switzerland).*

# CAMPOS POÉTICOS

SILVIA BÄCHLI

14 DE SEPTIEMBRE - 11 DE NOVIEMBRE 2023



1. *Untitled* (2012), Gouache on paper, 200 x 150 cm
2. *Untitled* (2017), Gouache on paper, 62 x 44 cm
3. *Untitled (Farbfeld 080)* (2022), Gouache on paper, 102 x 144 cm
4. *Untitled (Farbfeld 015)* (2023), Gouache on paper, 72 x 102 cm
5. *Untitled (Farbfeld 083)* (2022), Gouache on paper, 102 x 72 cm
6. *Untitled* (2020), Gouache on paper, 62 x 44 cm
7. *Untitled (Farbfeld)* (2023), Gouache on paper, 102 x 72 cm
8. *Untitled (Farbfeld 010)* (2023), Gouache on paper, 72 x 102 cm
9. *Untitled* (2023), Gouache on paper, 31 x 22,5 cm
10. *Untitled* (2022), Gouache on paper, 31 x 22 cm
11. *Schwarzw Linien (Finger)* (2023), Gouache on paper, 145 x 205 cm
12. *Untitled* (2017), Gouache on paper, 75 x 55 cm
13. *Untitled* (2017), Gouache on paper, 62 x 44 cm
14. *Untitled* (2020), Gouache on paper, 65 x 50 cm
15. *Untitled* (2018), Gouache on paper, 62 x 44 cm
16. *Untitled* (2019), Gouache on paper, 80 x 60 cm
17. *Mantel Nr.36* (2018), Gouache on paper, 204,3 x 72 cm
18. *Untitled* (2020), Gouache on paper, 65 x 50 cm
19. *Rote Bänder Nr.12* (2022), Gouache on paper, 144 x 204,3 cm
20. *Caves, 17 parts* (1989 - 2020), Charcoal pigments on inkjet print on Innova cotton rag paper
21. *Untitled* (1996), Pencil on paper, 21 x 14,8 cm