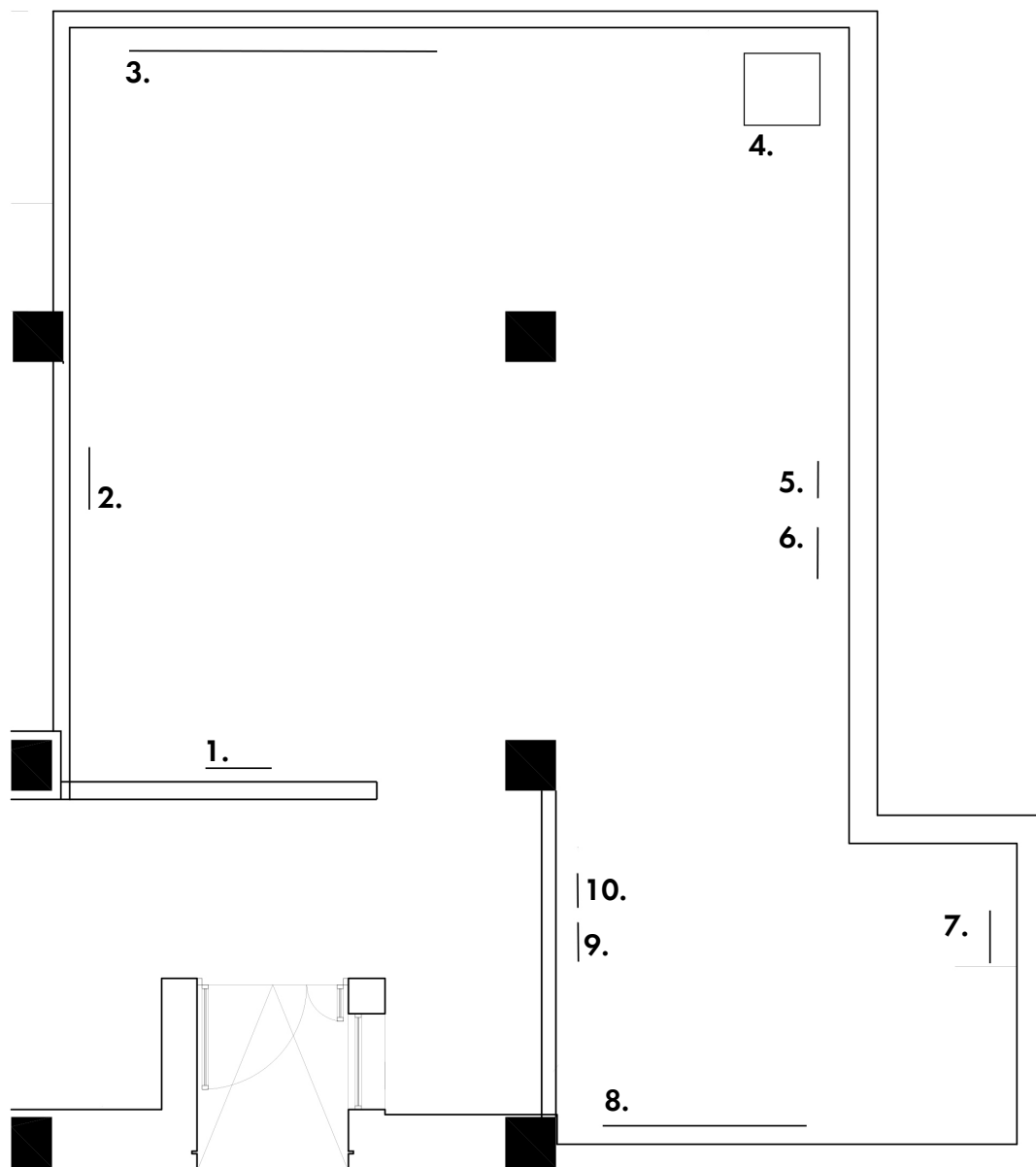


VIII. SALIR A RECIBIRLE

REBECCA HORN - REGINA DE MIGUEL - JOSÉ MIGUEL DE PRADA POOLE - ZUSH

14.12.2020 - 09.01.2021



REBECCA HORN. 4. *Homenaje a Octavio Paz*, 2015. Cast iron skull, steel, crystal ball, lamp, wooden base and electronic device. 130 x 31 x 31 cm | 51 x 12 x 12 in

REGINA DE MIGUEL. 1. *Arbustos de nervios como bosques de coral 02*, 2020. Watercolor, gouache and pencils on Arches paper. 55.5 x 43.5 cm | 22 x 17 in

2. *Andax viator*, 2020. Acuarela y lápices sobre papel Hannemülle. 39.5 x 31.5 cm | 15.5 x 12 in

6. *Arbustos de nervios como bosques de coral 01*, 2020. Watercolor, gouache and pencils on Arches paper. 55.5 x 43.5 cm | 22 x 17 in

7. *Arbustos de nervios como bosques de coral 04*, 2020. Watercolor, gouache and pencils on Arches paper. 55.5 x 43.5 cm | 22 x 17 in

9. *Arbustos de nervios como bosques de coral 03*, 2020. Watercolor, gouache and pencils on Arches paper. 55.5 x 43.5 cm | 22 x 17 in

10. *Arbustos de nervios como bosques de coral 06*, 2020. Watercolor, gouache and pencils on Arches paper. 55.5 x 43.5 cm | 22 x 17 in

JOSÉ MIGUEL DE PRADA POOLE. 8. *Form and universe*, 1981. Print. 104,5 x 104,5 cm | 41.2 x 41.2 in

ZUSH. 3. *Evrugo Mental State OC*, 1982. Mixed media on paper. 260 x 160 cm | 102 x 63 in

5. *Spedru*, 1980. Mixed media on paper. 113 x 22.5 cm | 44 x 9 in